



STATE OF NORTH CAROLINA
DEPARTMENT OF TRANSPORTATION

ROY COOPER
GOVERNOR

J. ERIC BOYETTE
SECRETARY

December 20, 2021

Addendum No. 1

Contract No.: DA00521

WBS Element: 1SP.20461.3

Manhole and Pipe Replacement on SR1456 (Catherine Creek Road) in Hertford County

To Whom It May Concern:

Reference is made to the proposal and plans previously furnished for this project.

The following revisions have been made to the proposal and plans:

Page 6, "Note to Contractor" has been revised to remove the first paragraph. Please replace the original Page 6, "Note to Contractor" with the attached revised Page 6, "Note to Contractor".

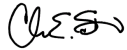
Page 36, "Temporary Shoring" has been revised to remove the last sentence in the first paragraph. Please replace the original Page 36, "Temporary Shoring" with the attached revised Page 36, "Temporary Shoring".

Pages 64 - 65, "Bid Form" has been revised to adjust the quantities and line items discussed at the pre-bid meeting. Please replace the original Pages 64 - 65, "Bid Form" with the attached revised Pages 64 - 65, "Bid Form".

Plan Sheet No. 4, "Typical Section #1" has been revised to show the revised backfill material and "Asphalt Plant Mix Pavement Repair" design. Please replace the original Plan Sheet No.4, "Typical Section #1" with the attached revised Plan Sheet No. 4, "Typical Section #1".

The amended EBS File (DA00521.001x) has been uploaded. We apologize for any inconvenience.

Sincerely,

DocuSigned by:

CDAEAC77A6394FB...

C. E. Slachta
Division Contract Engineer

Cc: S. D. Baker, PE
C. W. Bridgers, Jr., PE
R. W. Midgett, PE
R. K. Sawyer, PE
G. A. Byrum, PE
M. R. Hill, PE
C. B. Johnson, PE

CONTRACT TIME AND LIQUIDATED DAMAGES:

(7-1-95) (Rev. 12-18-07)

108

SP1 G10 A

The date of availability for this contract is **February 7, 2022**

The completion date for this contract is **May 27, 2022**

Except where otherwise provided by the contract, observation periods required by the contract will not be a part of the work to be completed by the completion date and/or intermediate contract times stated in the contract. The acceptable completion of the observation periods that extend beyond the final completion date shall be a part of the work covered by the performance and payment bonds.

The liquidated damages for this contract are **Six Hundred Dollars (\$600.00)** per calendar day.

PROSECUTION OF WORK:

(7-1-95) (Rev. 8-21-12)

108

SP1 G15R

The Contractor will be required to prosecute the work in a continuous and uninterrupted manner from the time he begins the work until completion and final acceptance of the project. The Contractor will not be permitted to suspend his operations except for reasons beyond his control or except where the Engineer has authorized a suspension of the Contractor's operations in writing.

In the event that the Contractor's operations are suspended in violation of the above provisions, the sum of **\$ 250.00** will be charged the Contractor for each and every calendar day that such suspension takes place. The said amount is hereby agreed upon as liquidated damages due to extra engineering and maintenance costs and due to increased public hazard resulting from a suspension of the work. Liquidated damages chargeable due to suspension of the work will be additional to any liquidated damages that may become chargeable due to failure to complete the work on time.

NOTES TO CONTRACTOR:

~~The contractor shall note that all pipes, drainage structures and any other excavations shall be backfilled with Select Material Class IV. All Select Material shall be compacted in accordance with all elements of Section 226 of the 2018 Standard Specifications. Payment for this Select Material shall be incidental to other pay items in contract and no separate payment will be made for this work.~~

The contractor shall note that the following line items were included in case the sewer line or sewer manhole fails as a result of this work: **Repair 6" – 8" Sanitary Gravity Sewer, 4' Diameter Utility Manhole.**

POSTED WEIGHT LIMITS:

(7-1-95) (Rev.9-15-15)

105

SP1 G24R

The Contractor's attention is directed to Article 105-15 of the *2018 Standard Specifications* and to the fact that various Primary and Secondary Roads and bridges may be posted with weight limits less than the legal limit. Do not exceed the posted weight limits in transporting materials and/or equipment to the projects. Make a thorough examination of all projects and haul routes and be prepared to discuss them at the Preconstruction Conference.

MATERIALS FOR PORTLAND CEMENT CONCRETE:

(9-15-20)

1000, 1024

SP10 R24

Revise the 2018 Standard Specifications as follows:

Page 10-52, Article 1024-4, WATER, lines 3-6, delete and replace with the following:

Test water from wells at all locations. Test public water supplies from all out of state locations and in the following counties: Beaufort, Bertie, Brunswick, Camden, Carteret, Chowan, Craven, Currituck, Dare, Gates, Hyde, New Hanover, Onslow, Pamlico, Pasquotank, Pender, Perquimans, Tyrell and Washington unless the Engineer waives the testing requirements.

Page 10-52, Table 1024-2, PHYSICAL PROPERTIES OF WATER, replace with the following:

TABLE 1024-2 PHYSICAL PROPERTIES OF WATER		
Property	Requirement	Test Method
Compression Strength, minimum percent of control at 3 and 7 days	90%	ASTM C1602
Time of set, deviation from control	From 1:00 hr. earlier to 1:30 hr. later	ASTM C1602
pH	4.5 to 8.5	ASTM D1293 *
Chloride Ion Content, Max.	250 ppm	ASTM D512 *
Total Solids Content (Residue), Max.	1,000 ppm	SM 2540B *
Resistivity, Min.	0.500 kohm-cm	ASTM D1125 *

*Denotes an alternate method is acceptable. Test method used shall be referenced in the test report.

TEMPORARY SHORING:

(2-20-07) (Rev. 10-19-21)

SP11 R02

Description

Temporary shoring includes cantilever, braced and anchored shoring and temporary mechanically stabilized earth (MSE) walls. Temporary shoring does not include trench boxes. At the Contractor's option, use any type of temporary shoring unless noted otherwise in the plans or as directed. Design and construct temporary shoring based on actual elevations and shoring dimensions in accordance with the contract and accepted submittals. Construct temporary shoring at locations shown in the plans and as directed. Temporary shoring is required to maintain traffic when a 2:1 (H:V) slope from the top of an embankment or bottom of an excavation will intersect the existing ground line less than 5 feet from the edge of pavement of an open travelway. ~~This provision does not apply to pipe, inlet or utility installation unless noted otherwise in the plans.~~

County : Hertford

Line #	Item Number	Sec #	Description	Quantity	Unit Cost	Amount
ROADWAY ITEMS						
0001	0000100000-N	800	MOBILIZATION	Lump Sum	L.S.	
0002	0043000000-N	226	GRADING	Lump Sum	L.S.	
0003	0199000000-E	SP	TEMPORARY SHORING	400 SF		
0004	0318000000-E	300	FOUNDATION CONDITIONING MATERIAL, MINOR STRUCTURES	230 TON		
0005	0320000000-E	300	FOUNDATION CONDITIONING GEOTEXTILE	220 SY		
0006	1693000000-E	654	ASPHALT PLANT MIX, PAVEMENT REPAIR	40 TON		
0007	2253000000-E	840	PIPE COLLARS	4 CY		
0008	2286000000-N	840	MASONRY DRAINAGE STRUCTURES STD 840.34	1 EA		
0009	2308000000-E	840	MASONRY DRAINAGE STRUCTURES STD 840.34	3.2 LF		
0010	2396000000-N	840	FRAME WITH COVER, STD 840.54	1 EA		
0011	2484000000-E	SP	GENERIC DRAINAGE ITEM (INSTALL NCDOT PROVIDED FLEXIBLE PIPE CULVERTS: 30"-36")	40 LF		
0012	2484000000-E	SP	GENERIC DRAINAGE ITEM (INSTALL NCDOT PROVIDED RIGID PIPE CULVERTS: 15"-18")	20 LF		
0013	2549000000-E	846	2'-6" CONCRETE CURB & GUTTER	50 LF		
0014	5882000000-N	SP	GENERIC UTILITY ITEM (4' DIA UTILITY MANHOLE)	1 EA		
0015	5888000000-E	SP	GENERIC UTILITY ITEM (REPAIR 1.5" - 2" WATER LINE)	30 LF		
0016	5888000000-E	SP	GENERIC UTILITY ITEM (REPAIR 6" - 8" SANITARY GRAVITY SEWER)	40 LF		

County : Hertford

Line #	Item Number	Sec #	Description	Quantity	Unit Cost	Amount
0017	1121000000-E	520	AGGREGATE BASE COURSE	50		
				TON		

1200/Dec20/Q1132.2/D38112100000/E17

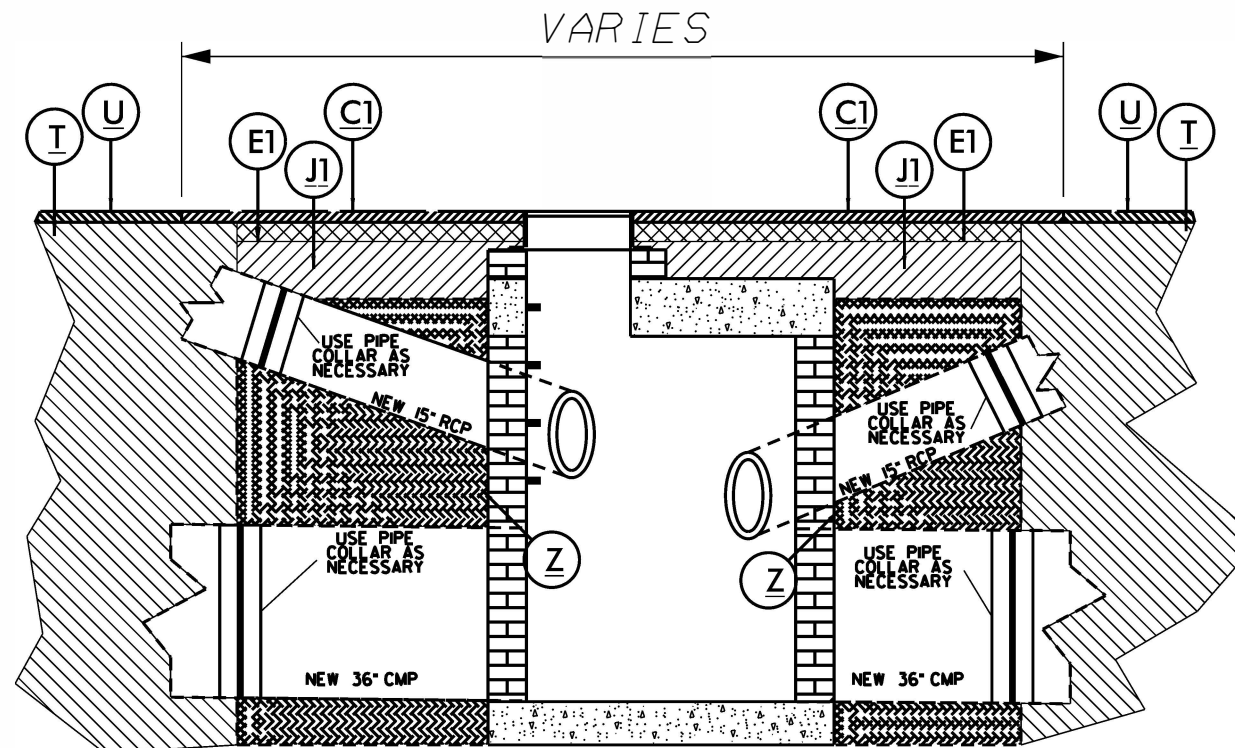
Total Amount Of Bid For Entire Project :

PAVEMENT SCHEDULE

NOTES: REVISED: 12/20/2021 SPF

C1	PROP. APPROX. 2.0" ASPHALT CONCRETE SURFACE COURSE, TYPE S9.5B, AT AN AVERAGE RATE OF 220 LBS. PER SQ. YD (ASPHALT PLANT MIX, PAVEMENT REPAIR)
E1	PROP. APPROX. 4" ASPHALT CONCRETE BASE COURSE, TYPE B25.0C AT AN AVERAGE RATE OF 456 LBS. PER SQ. YD. (ASPHALT PLANT MIX PAVEMENT REPAIR)
J1	12" AGGREGATE BASE COURSE.
U	EXISTING PAVEMENT.
T	EXISTING EARTH MATERIAL.
Z	FOUNDATION CONDITIONING MATERIAL, MINOR STRUCTURES

- *STORM WATER MANHOLE "B" SHALL BE REMOVED IN ITS ENTIRETY.
- *RECONSTRUCTION OF STORM WATER MANHOLE "B" SHALL BE IN ACCORDANCE WITH STD DWG 840.34.
- *CONTRACTOR SHALL INSPECT STORM WATER PIPES CONNECTING TO SMH "B". DAMAGED OR DETERIORATED PIPE SHALL BE REMOVED AND REPLACED WITH NCDOT PROVIDED PIPE.
- *PIPE COLLARS TO CONNECT NEW PIPE TO EXISTING SHALL BE ACCORDANCE WITH STD DWG 840.72.
- *EXISTING UTILITY LOCATIONS SHOWN FOR REFERENCE ONLY. CONTRACTOR SHALL VERIFY UTILITY LOCATIONS PRIOR TO CONSTRUCTION.
- *BACKFILL ALL EXCAVATIONS WITH FOUNDATION CONDITIONING MATERIAL STARTING 2" BELOW PIPE. ENCAPSULATE FOUNDATION CONDITIONING STONE WITH FOUNDATION CONDITIONING GEOTEXTILE



TYPICAL SECTION NO. 1

NTS

SYSTEMS DESIGN & CONSTRUCTION